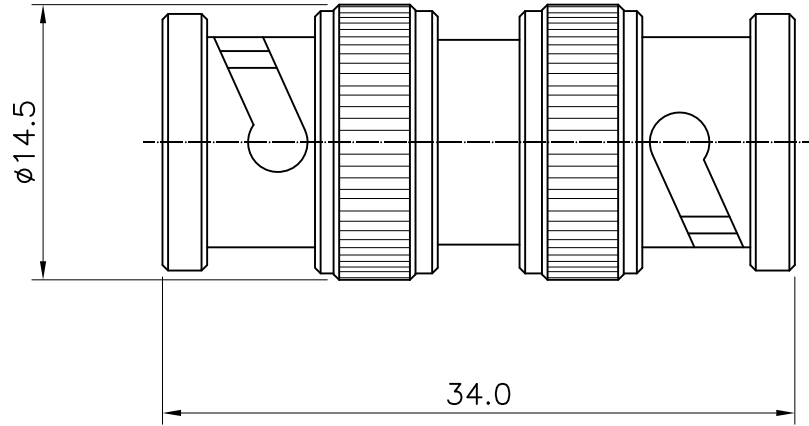


1 2 3 4 5 6

No.	Revision	Date	Name
△			
△			

RoHS Compliant



Electrical data

1. Impedance : 50Ω
2. Frequency range : DC~4GHz
3. Contact current : DC .5A max.
4. Voltage rating : 500Vrms
5. Contact resistance : Center contacts : $2.0m\Omega$
Outer contacts : $1.0m\Omega$
6. Insulation resistance : $5000M\Omega$ min.
7. Insertion loss : 0.3dB at 3GHz
8. V.S.W.R : ≤ 1.15

Item	Materials	Plating
Body,Coupling cap	Stainless steel	Passivated
Center contact	Brass	Gold Plated
Insulator	PTFE	-

BNC-PLUG TO PLUG-Adaptor

NO.	DESCRIPTION	Q'TY	MATERIAL	FINISH	REMARKS.
PARTS No.	BNC-801-002	NAME	BNC-PP-Adaptor		APPROVED
MATERIAL	FINISH	TOLERANCES OTHERWISE SPEC. ± 0.05		ANGLES $\pm 1^\circ$	CHECKED
SCALE		UNIT	mm		DESIGNED S.J.LEE
		DWG NO.	BNC-801-002		DATE. 25/SEP/2013

CUSTOMER

D

C

B

A