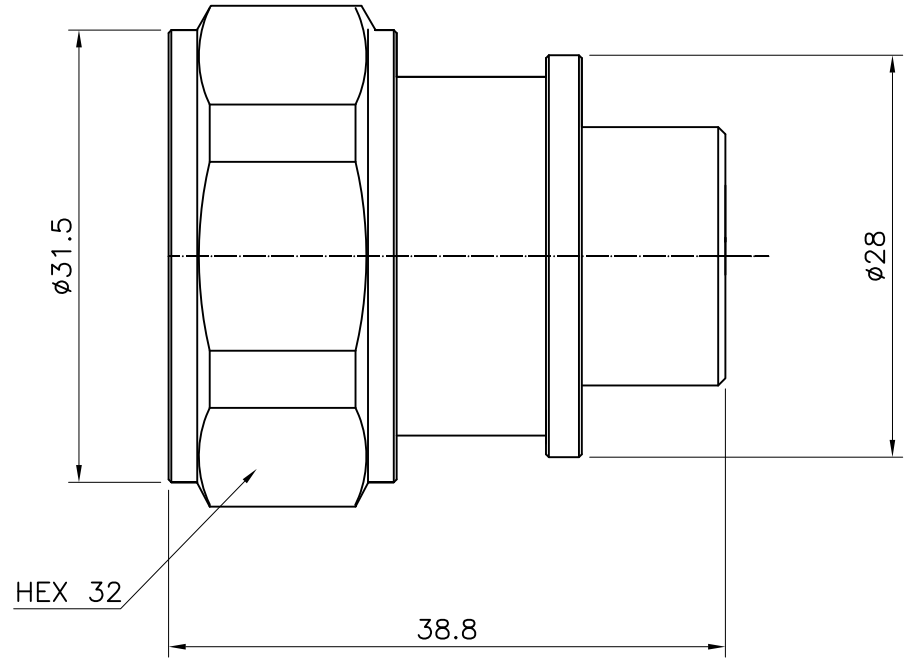


1 2 3 4 5 6

No.	Revision	Date	Name
△			
△			

RoHS Compliant



SPECIFICATIONS

Frequency Range----- DC-3GHz
 VSWR-----1.20:1Max.
 Impedance----- 50 Ohms
 Power Rating----- 3 Watts
 Oper Temp Range----- -50°C~+125°C
 7/16 Connector----- Brass/SUCO Plated
 Conductors----- Brass/Gold Plated

** IP68 GRADE

DIN7/16-Type MALE Termination

CUSTOMER

NO.	DESCRIPTION	Q'TY	MATERIAL	FINISH	REMARKS.
PARTS No.	D716-901-002	NAME	7/16 Male Termination		APPROVED
MATERIAL	FINISH	TOLERANCES OTHERWISE SPEC. ±0.05		ANGLES ±1°	CHECKED
SCALE		UNIT	mm		DESIGNED S.J.LEE
		DWG NO.	D716-901-002		DATE. 16/DEC/2011