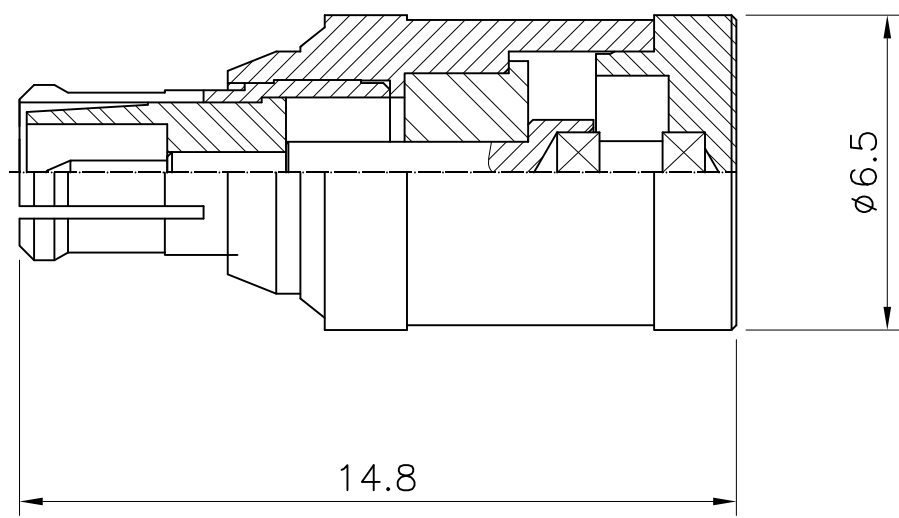


No.	Revision	Date	Name
△	PN Change from 1M-901-00	04/09/2013	B.G.YUN
△			



SPECIFICATIONS

Frequency Range----- DC-4GHz
 VSWR-----1.15:1Max.
 Impedance----- 50 Ohms
 Power Rating----- 1 Watts
 Oper Temp Range----- -55°C~+145°C

CONNECTOR----- Brass/Gold plated
 Outer Conductors-----Be-Cu/Gold plated
 Center Conductors----- Brass/Gold plated

CUSTOMER

NO.	DESCRIPTION	Q'TY	MATERIAL	FINISH	REMARKS.
PARTS No.	MCX-901-001		NAME	MCX-MALE-TERMINATION	APPROVED
MATERIAL	FINISH	TOLERANCES OTHERWISE SPEC. ±0.05		ANGLES ±1°	CHECKED
		SCALE	UNIT mm		DESIGNED S.J.LEE
		DWG NO.		MCX-901-001	DATE. 27/MAY/2007