

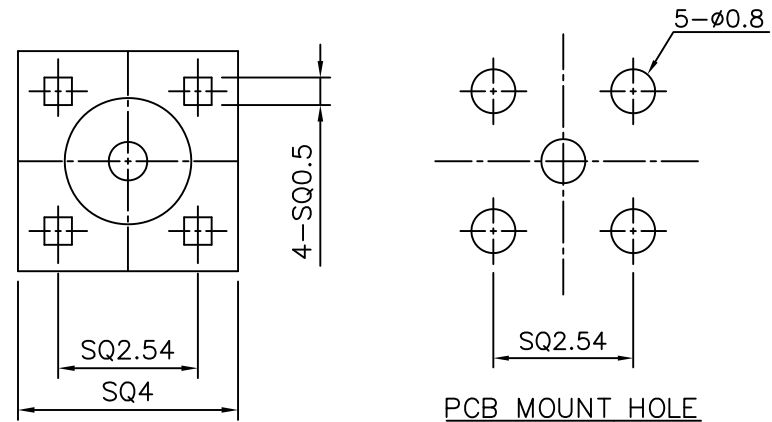
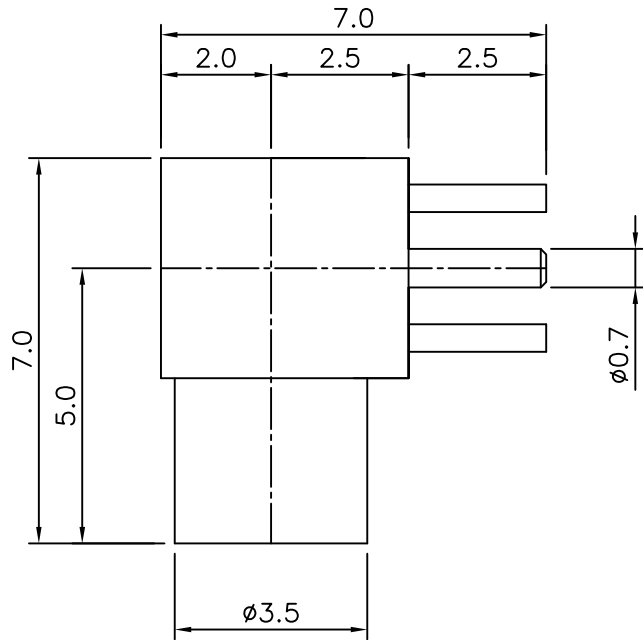
1 2 3 4 5 6

No.	Revision	Date	Name
▲	PN Change from 1X-702-00	12/FEB/2014	S.J.PARK
▲			

SPECIFICATIONS

Impedance ; 50ohm
 Frequency range ; DC~6GHz
 V.S.W.R : 1.2:1max @6GHz
 Working voltage : 170 VRMS
 Temperature range : -55°C to +155°C

RoHS Compliant



MMCX-Right Angle JACK
PCB MOUNT

Connector parts	Materials	Finish
Body	Brass	Gold Plated
Center contact	Beryllium copper	Gold Plated
Insulator	Brass	Gold Plated
	TEFLON	-

CUSTOMER

NO.	DESCRIPTION	Q'TY	MATERIAL	FINISH	REMARKS.
PARTS No.	MMCX-608-001	NAME	MMCX-LJ PCB MOUNT		APPROVED
MATERIAL	FINISH	TOLERANCES OTHERWISE SPEC. ±0.05		ANGLES ±1°	CHECKED
		SCALE	UNIT mm		DESIGNED S.J.LEE
		DWG NO. MMCX-608-001		DATE. 02/JUN/2009	