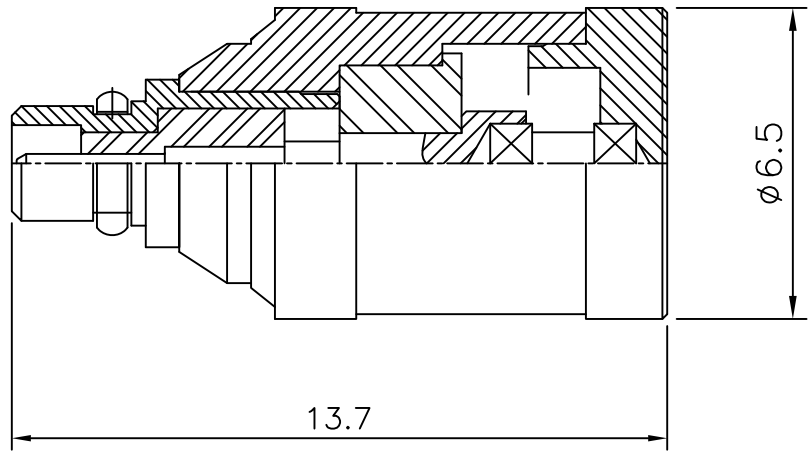


1 2 3 4 5 6

No.	Revision	Date	Name
△			
△			

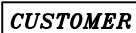

RoHS Compliant



SPECIFICATIONS

Frequency Range----- DC-6GHz
 VSWR-----1.25:1Max.
 Impedance----- 50 Ohms
 Power Rating----- 1 Watts
 Oper Temp Range----- -35°C~+85°C

CONNECTOR----- Brass/Gold plated
 Outer Conductors-----Be-Cu/Gold plated
 Center Conductors----- Brass/Gold plated

NO.	DESCRIPTION	Q'TY	MATERIAL	FINISH	REMARKS.
PARTS No.	MMCX-901-001	NAME	MMCX-P TERM		APPROVED
MATERIAL	FINISH	TOLERANCES OTHERWISE SPEC. ±0.05		ANGLES ±1°	CHECKED
 CUSTOMER		SCALE	UNIT		DESIGNED S.J.LEE
		DWG NO.	mm		MMCX-901-001

 DONGJIN TI.