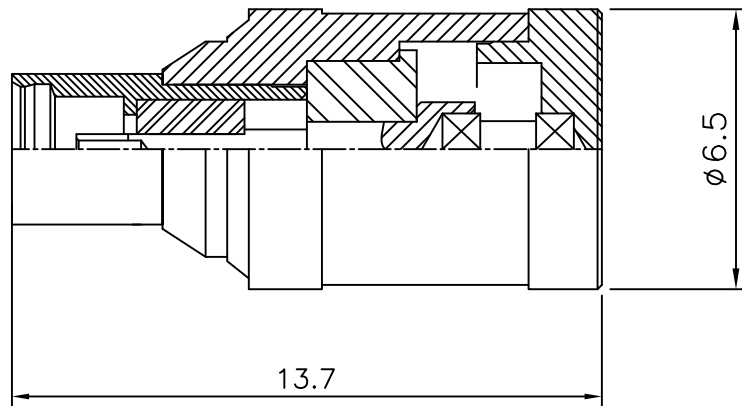


4	5	6	
No.	Revision	Date	Name
△	PN Change from 1X-902-00	30/OCT/2013	S.J.PARK
△			

RoHS Compliant



SPECIFICATIONS

Frequency Range----- DC-6GHz  
 VSWR-----1.25:1Max.  
 Impedance----- 50 Ohms  
 Power Rating----- 1 Watts  
 Oper Temp Range----- -35°C~+85°C

CONNECTOR----- Brass/Gold plated  
 Outer Conductors-----Be-Cu/Gold plated  
 Center Conductors----- Brass/Gold plated

NO.	DESCRIPTION	Q'TY	MATERIAL	FINISH	REMARKS.
PARTS No.	MMCX-902-001	NAME	MMCX-J TERM		APPROVED
MATERIAL	FINISH	TOLERANCES OTHERWISE SPEC. $\pm 0.05$		ANGLES $\pm 1^\circ$	CHECKED
		SCALE	UNIT		DESIGNED S.J.LEE
			mm		DWG NO.
CUSTOMER		MMCX-902-001			