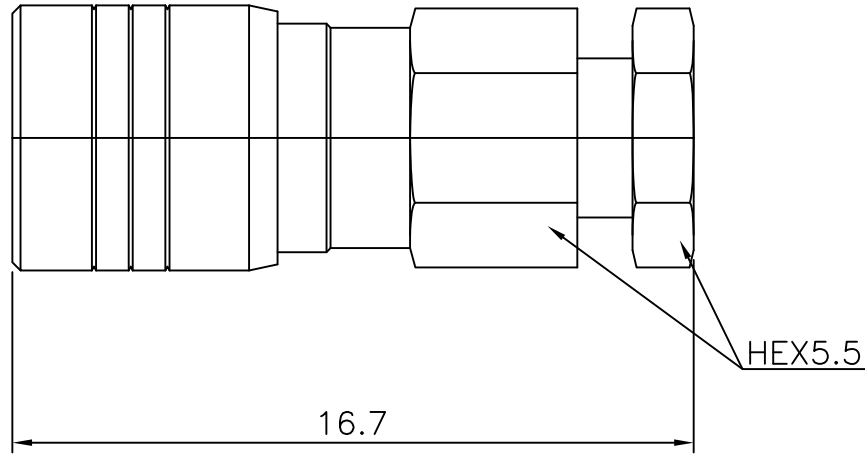


1 2 3 4 5 6

No.	Revision	Date	Name
△			
△			

RoHS Compliant



SLB—Straight Female
Cable PLUG—RG178DS
(Captive contact)

Connector parts	Materials	Finish
Body	BRASS	Gold Plated
Coupling Cap	BRASS	Gold Plated
Back Nut	BRASS	Gold Plated
Center contact	Beryllium copper	Gold Plated
Insulator	PTFE	

NO.	DESCRIPTION	Q'TY	MATERIAL	FINISH	REMARKS.
PARTS No. SLB-110-002		NAME SLB-SP RG178D CLAMP		APPROVED S.J.LEE	
MATERIAL		FINISH		TOLERANCES OTHERWISE SPEC. ±0.05 ANGLES ±1°	
		SCALE	UNIT mm	DESIGNED S.J.PARK	
		DWG NO. SLB-110-002		DATE. 12/DEC/2013	

CUSTOMER

D
C
B
A