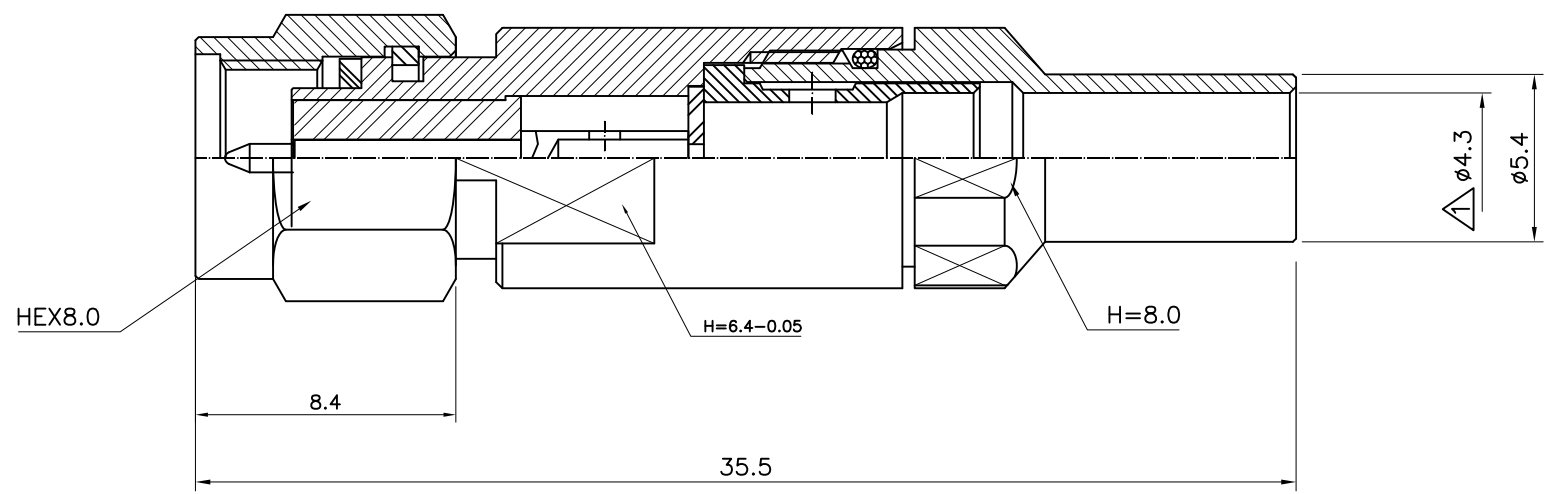


No.	Revision	Date	Name
△	PN Change from 1S-112-SS402	05/08/2013	B.G.YUN
△	Back Nut ID Change from $\phi 4.2$ to $\phi 4.3$	05/08/2013	B.G.YUN

RoHS Compliant



SMA-Stright-PLUG
for Cable:RG402(Solder+Clamp)

Connector parts	Materials	Finish
Coupling Cap	Stainless steel	Passivated
Body	Brass	Nickel Plated
Center contact	Brass	Gold Plated
Cable sleeve	Brass	Gold Plated
Back Nut	Brass	Nickel Plated
Insulator	PTFE	-
O-Ring	Silicone rubber	-

CUSTOMER

NO.	DESCRIPTION	Q'TY	MATERIAL	FINISH	REMARKS.
PARTS No.	SMA-105-001		NAME	SMA-SP-402CLAMP	APPROVED
MATERIAL	FINISH	TOLERANCES OTHERWISE SPEC. ± 0.05		ANGLES $\pm 1^\circ$	CHECKED
SCALE N/S		UNIT mm			DESIGNED S.J.LEE
DONGJIN TI.		DWG NO.		SMA-105-001	DATE. 06/FEB/2008