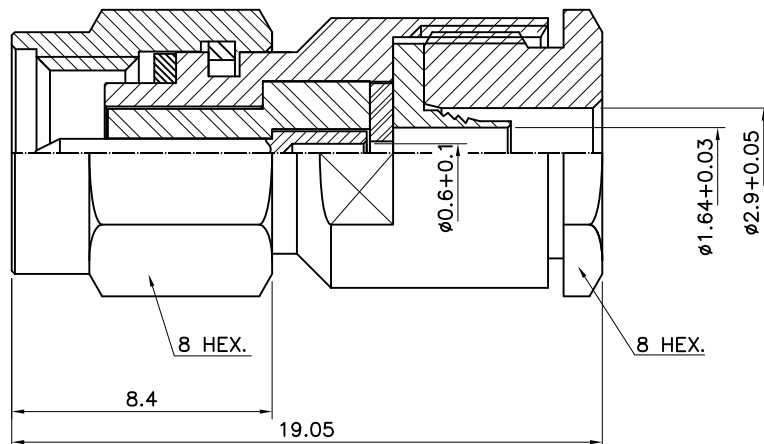


No.	Revision	Date	Name
△	PN Change from 1S-1211S-3917	02/10/2013	B.G.YUN
△			

RoHS Compliant



SMA-Straight-PLUG CLAMP
for Cable-RG316

Connector parts	Materials	Finish
Coupling Cap	Stainless steel	Passivated
Body,Coupling Nut	Stainless steel	Passivated
Center contact	Brass	Gold Plated
Insulator	PTFE	-
Gasket	Silicone rubber	-
Cable ferrule	Brass	Gold Plated

CUSTOMER

NO.	DESCRIPTION	Q'TY	MATERIAL	FINISH	REMARKS.
PARTS No.	SMA-111-018		NAME SMA-SP-RG316 CLAMP		APPROVED
MATERIAL	FINISH	TOLERANCES OTHERWISE SPEC. ±0.05		ANGLES ±1°	CHECKED
		SCALE N/S	UNIT mm		DESIGNED S.J.LEE
		DWG NO. SMA-111-018		DATE. 24/AUG/2011	