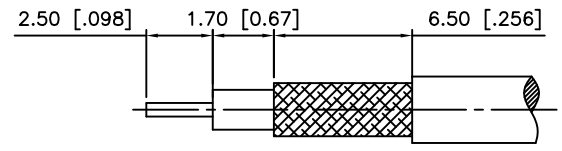
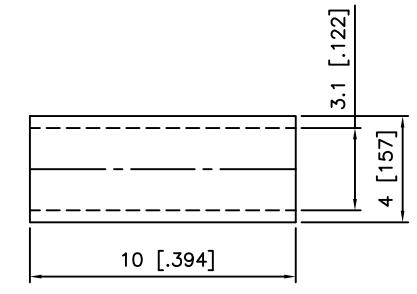
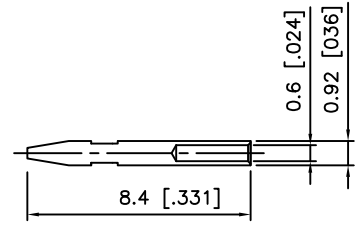
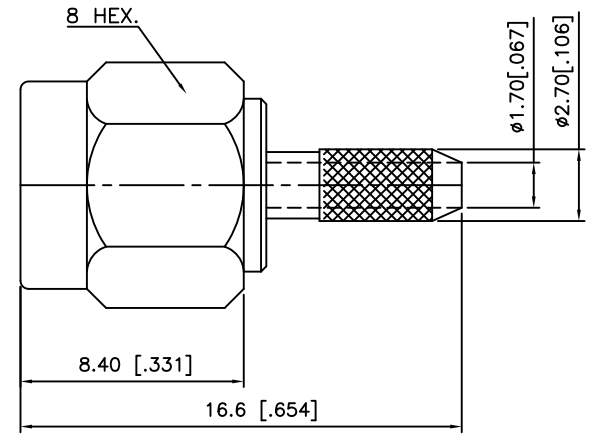
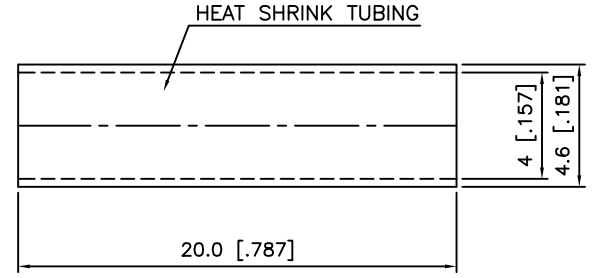


4	No.	Revision	5	Date	6	Name
	△					
	△					

RoHS Compliant



RECOMMENDED
CABLE STRIPPING DIM'S



SMA-CRIMP PLUG
(FOR RG-174/U,188A/U,316/U)

NOTE:
1. CRIMPED FERRULE HEX CRIMP SIZE 3.25 [.128"]

Connector parts	Materials	Finish
Body,Coupling cap	Brass	Gold Plated
Center contact	Brass	Gold Plated
Insulator	PTFE	-
Ferrule	Brass	Gold Plated

CUSTOMER

NO.	DESCRIPTION	Q'TY	MATERIAL	FINISH	REMARKS.
PARTS No.	SMA-111-022	NAME	SMA-ST PLUG RG188		APPROVED S.J.LEE
MATERIAL	FINISH	TOLERANCES	OTHERWISE SPEC. ±0.05 ANGLES ±1°		CHECKED
		SCALE	UNIT		DESIGNED S.J.PARK
		DWG NO.	SMA-111-022		DATE. 25/NOV/2013

