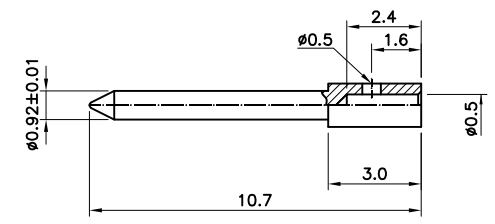
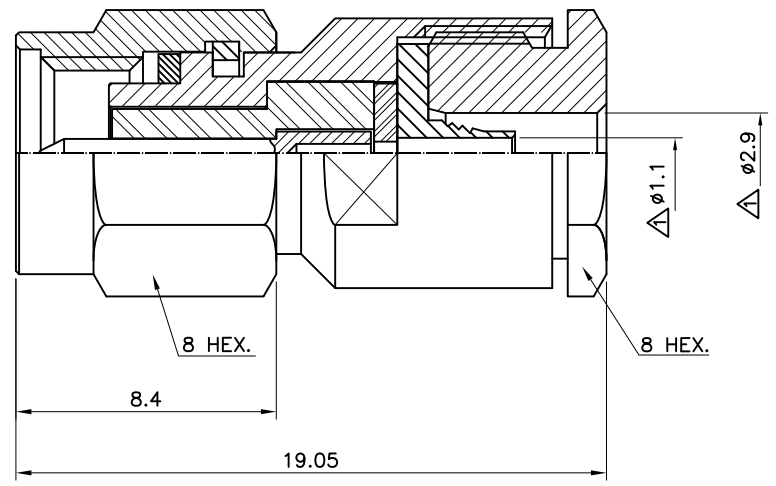


No.	Revision	Date	Name
①	1. Diameter change from $\phi 1.0$ to $\phi 1.1$ 2. Diameter change from $\phi 2.6$ to $\phi 2.9$	20/MAY/2013	K.Y.SON
②	PN Change from 1S-1211S-018	16/JUL/2013	B.G.YUN

RoHS Compliant



Center contact

SMA-Straight-PLUG CLAMP
for Cable-Raychem 5028A3318

Connector parts	Materials	Finish
Coupling Cap	Stainless steel	Passivated
Body, Clamp Nut	Stainless steel	Passivated
Center contact	Brass	Gold Plated
Insulator	PTFE	-
Gasket	Silicone rubber	-
Cable ferrule	Brass	Gold Plated

CUSTOMER

NO.	DESCRIPTION	Q'TY	MATERIAL	FINISH	REMARKS.
PARTS No.	SMA-116-003		NAME	SMA-SP 5028A3318 CLAMP	APPROVED
MATERIAL	FINISH	TOLERANCES OTHERWISE SPEC. ± 0.05 ANGLES $\pm 1^\circ$			CHECKED
		SCALE N/S	UNIT mm		DESIGNED S.J.LEE
		DWG NO.	SMA-116-003		DATE. 12/MAR/2011

