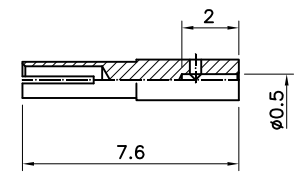
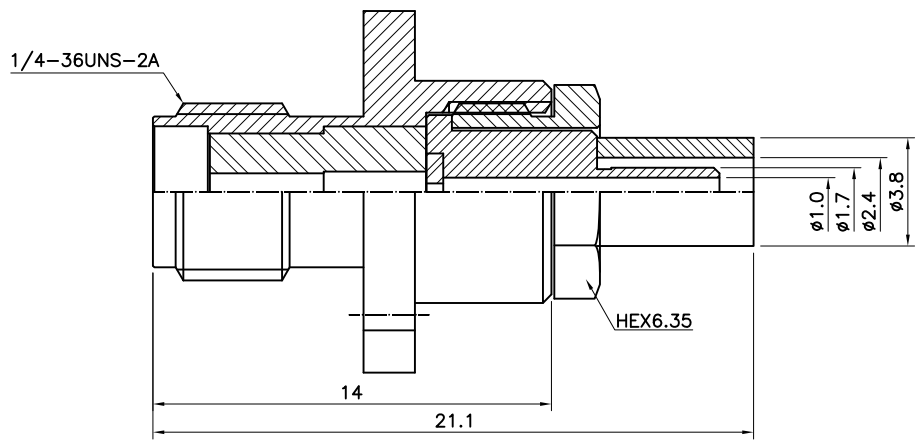
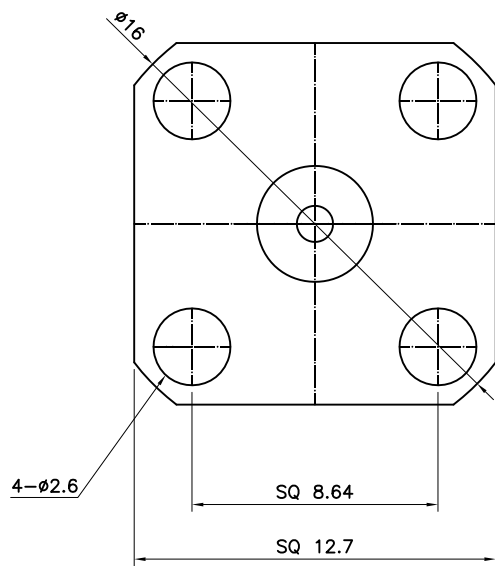


1 2 3 4 5 6

No.	Revision	Date	Name
△			
△			

RoHS Compliant



Connector parts	Materials	Finish
Body, Barrel, Nut	Stainless steel	Passivated
Center contact	Beryllium copper	Gold Plated
Ferrule	Brass	Nickel Plated
Insulator	PTFE	-

SMA-Stright Jack
CRIMP for Cable:RG178

NO.	DESCRIPTION	Q'TY	MATERIAL	FINISH	REMARKS.
PARTS No.	SMA-210-002	NAME	SMA-SJ RG178		APPROVED S.J.LEE
MATERIAL	FINISH	TOLERANCES OTHERWISE SPEC. ± 0.05	ANGLES $\pm 1^\circ$		CHECKED
SCALE	N/S	UNIT	mm		DESIGNED S.J.PARK
DWG NO.	SMA-210-002			DATE.	24/JUL/2013

CUSTOMER

