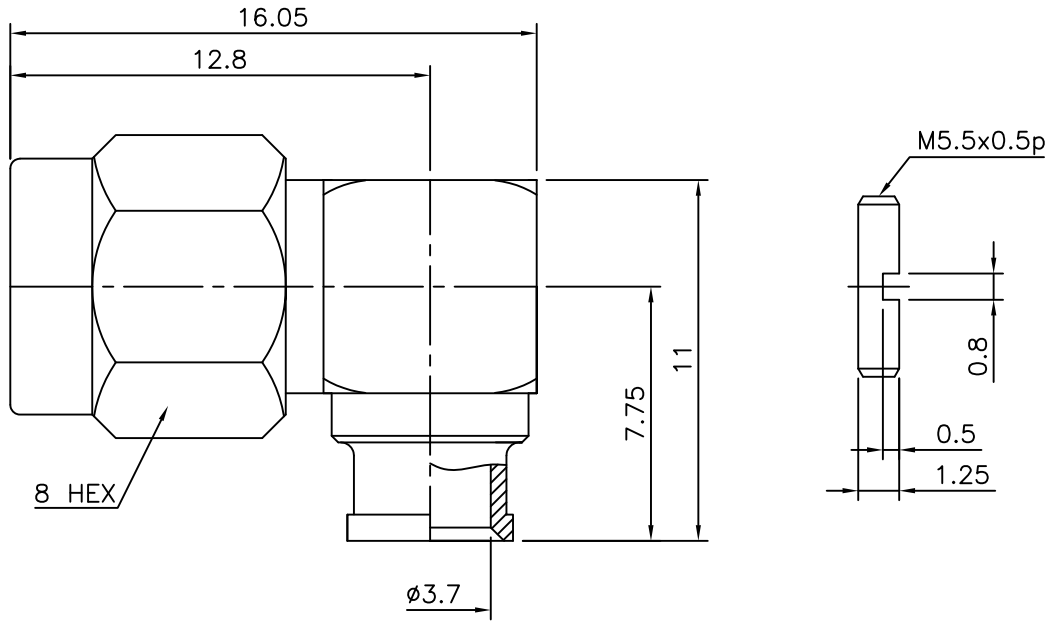


1	2	3	4	5	6
ELECTRICAL RATINGS			No.	Revision	Date
Impedance : 50 ohm			△		
Frequency Range : DC~12.4GHz			△		
V.S.W.R : 1.10 +0.1x $\sqrt{F}$ (GHz)			RoHS Compliant		
Insertion loss : 0.05 $\sqrt{F}$ (GHz)					
Working Voltage : 335 VRMS max					
Dielectric Withstanding Voltage : 750V min					
Insulation Resistance : 5000M $\Omega$ min					
Temperature range : -55~+145°C					

D  
C  
B  
A



Connector parts	Materials	Finish
Coupling Cap	Brass	Gold Plated
Body	Brass	Gold Plated
Screw cap	Brass	Gold Plated
Center contact	Brass	Gold Plated
Insulator	PTFE	-

SMA-Right Angle-PLUG  
for Cable-UT141

CUSTOMER

NO.	DESCRIPTION	Q'TY	MATERIAL	FINISH	REMARKS.
PARTS No.	SMA-302-015	NAME	SMA-LP-141		APPROVED S.J.LEE
MATERIAL	FINISH	TOLERANCES OTHERWISE SPEC. $\pm 0.05$		ANGLES $\pm 1^\circ$	CHECKED
SCALE N/S		UNIT mm			DESIGNED S.J.PARK
DWG NO.		SMA-302-015			DATE. 16/JAN/2014

