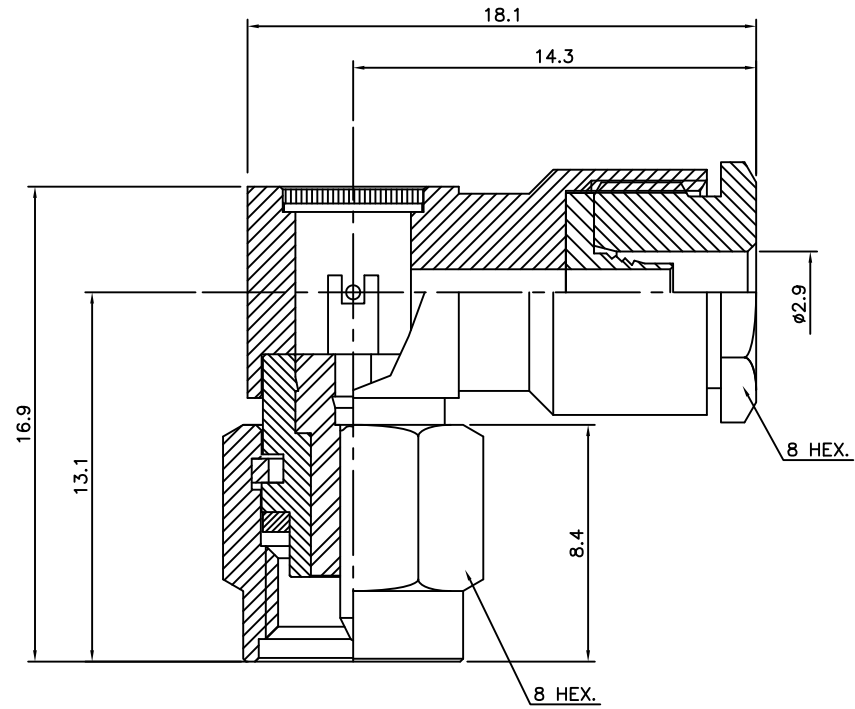


4	5	6	
No.	Revision	Date	Name
△	PN Change from from 1S-3211S-002	02/OCT/2013	S.J.PARK
△			

RoHS Compliant



SMA-Right Angle-PLUG CLAMP
for Cable-RG316,174

Connector parts	Materials	Finish
Coupling Cap	Stainless steel	Passivated
Body, Clamp Nut	Stainless steel	Gold Plated
Center contact	Brass	Gold Plated
Insulator	PTFE	-
Gasket	Silicone rubber	-
Cable ferrule	Brass	Gold Plated

CUSTOMER

NO.	DESCRIPTION	Q'TY	MATERIAL	FINISH	REMARKS.
PARTS No.	SMA-311-005		NAME	SMA-LP316 CLAMP	APPROVED
MATERIAL	FINISH	TOLERANCES OTHERWISE SPEC. ±0.05		ANGLES ±1°	CHECKED
SCALE N/S		UNIT mm			DESIGNED S.J.LEE
		DONGJIN TI.		DWG NO.	SMA-311-005
					DATE. 17/DEC/2010