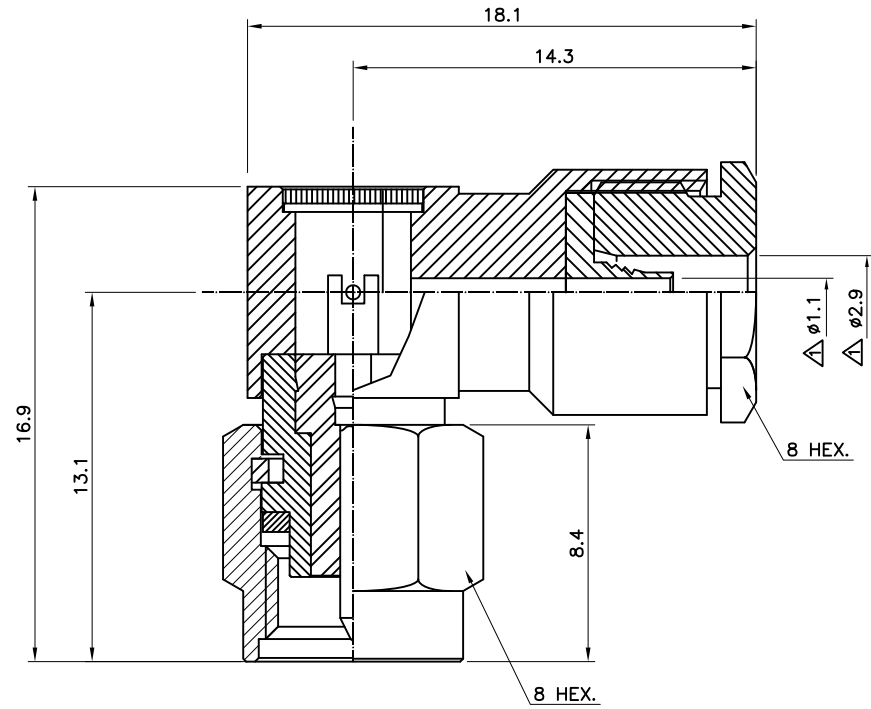


No.	Revision	Date	Name
①	1. Diameter change from $\phi 1.0$ to $\phi 1.1$ 2. Diameter change from $\phi 2.6$ to $\phi 2.9$	20/MAY/2013	K.Y.SON
②	PN Change from 1S-3211S-018	16/JUL/2013	B.G.YUN

RoHS Compliant



SMA-Right Angle-PLUG CLAMP  
for Cable-Raychem 5028A3318

Connector parts	Materials	Finish
Coupling Cap	Stainless steel	Passivated
Body, Clamp Nut	Stainless steel	Passivated
Center contact	Brass	Gold Plated
Insulator	PTFE	-
Gasket	Silicone rubber	-
Cable ferrule	Brass	Gold Plated

NO.	DESCRIPTION	Q'TY	MATERIAL	FINISH	REMARKS.
PARTS No.	SMA-311-007		NAME	SMA-LP 5028A3318 CLAMP	APPROVED
MATERIAL	FINISH	TOLERANCES OTHERWISE SPEC. $\pm 0.05$ ANGLES $\pm 1^\circ$		CHECKED	
SCALE N/S		UNIT mm	DESIGNED S.J.LEE		DATE. 26/APR/2011
CUSTOMER		DONGJIN TI.		DWG NO. SMA-311-007	