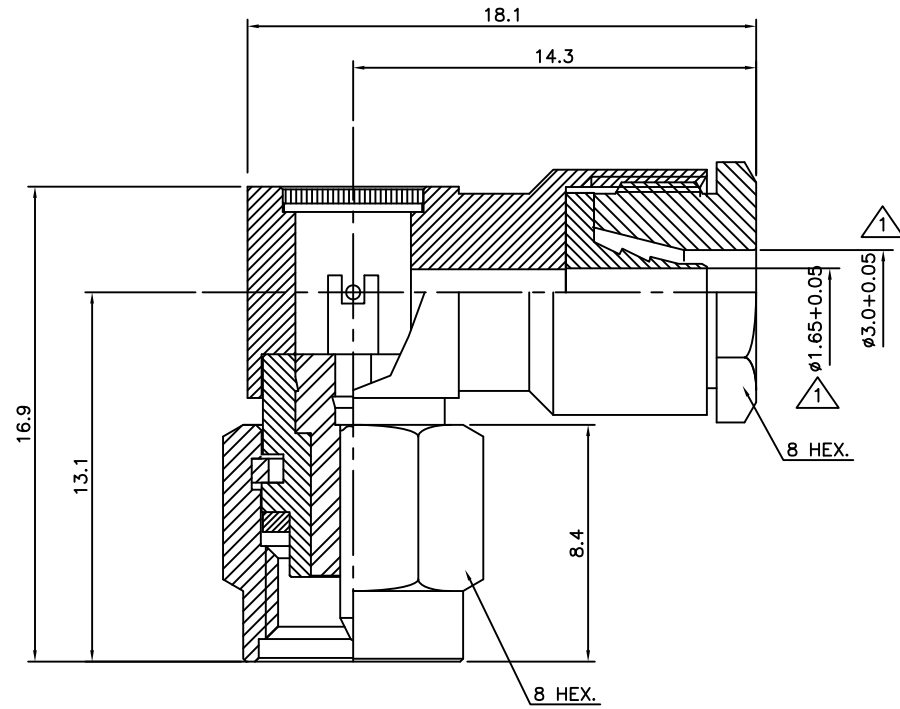


No.	Revision	Date	Name
①	CLAMP Nut ID change from 3.6 to 3.0+0.05	31/05/2013	B.G.YUN
①	Cable ferrule & Body ID update as 1.65+0.05	31/05/2013	B.G.YUN
②	PN Change from 1S-3211S-003	27/06/2013	B.G.YUN

RoHS Compliant



SMA-Right Angle-PLUG CLAMP
for Cable-RG316D/S

Connector parts	Materials	Finish
Coupling Cap	Stainless steel	Passivated
Body, Clamp Nut	Stainless steel	Gold Plated
Center contact	Brass	Gold Plated
Insulator	PTFE	-
Gasket	Silicone rubber	-
Cable ferrule	Brass	Gold Plated

CUSTOMER

NO.	DESCRIPTION	Q'TY	MATERIAL	FINISH	REMARKS.
PARTS No.	SMA-311-013	NAME		SMA-LP316D/S CLAMP	APPROVED
MATERIAL	FINISH	TOLERANCES		OTHERWISE SPEC. ± 0.05	ANGLES $\pm 1^\circ$
SCALE		N/S	UNIT	mm	DESIGNED S.J.LEE
DWG NO.		SMA-311-013		DATE. 17/DEC/2010	

