

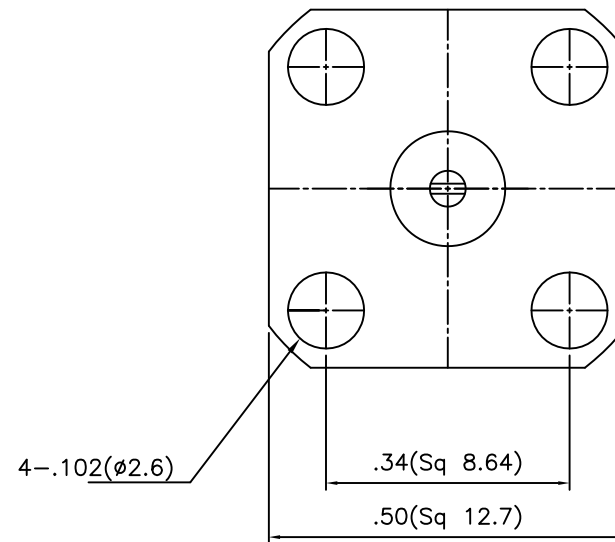
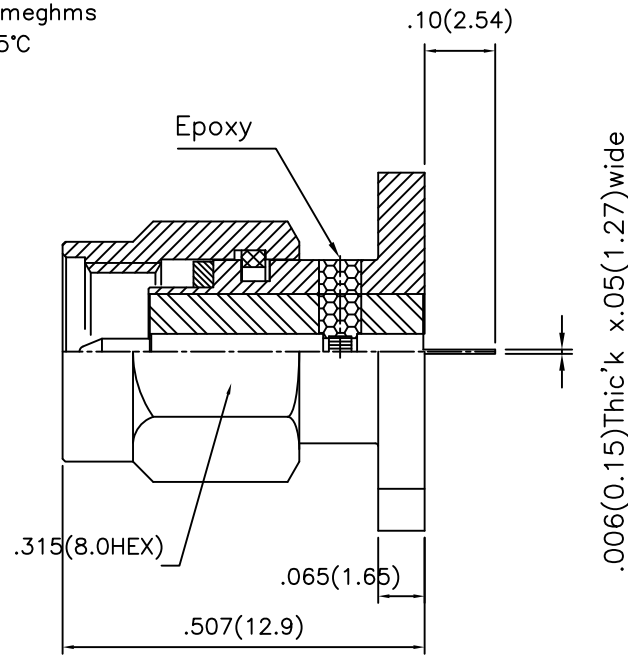
1                                  2                                  3                                  4                                  5                                  6

**SPECIFICATIONS;**

Impedance : 50 Ohms  
 Frequency Range :DC~18 GHz  
 Directric Withstanding Voltage : 750 VRMS  
 Insulation Resistance : 5000 meghms  
 Temperture Range : -55~125°C  
 VSWR : 1.2:1 max @ 18GHz

No.	Revision	Date	Name
▲	PN Change from 1S-515SG-ST0025E	14/FEB/2014	S.J.PARK
▲			

RoHS Compliant



**NOTES:**

1. INTERFACE PER MIL-STD-348
2. MATERIALS  
 INSULATOR: TEFLON  
 CENTER CONTACT: BERYLLIUM COPPER  
 BODY,COUPLING CAP: STAINLESS STEEL 303
3. FINISHES  
 CENTER CONTACT: GOLD PLATE  
 BODY,COUPLING CAP: GOLD PLATE
4. CENTER CONTACT TO BE EPOXY-CAPTIVATED

SMA-Panel PLUG Receptacle  
 4-Hole/ (SQ 1/2")-TAB CONTACT

**CUSTOMER**

NO.	DESCRIPTION	Q'TY	MATERIAL	FINISH	REMARKS.
PARTS No.	SMA-503-012	NAME	SMA-M4H RECEP.		APPROVED
MATERIAL	FINISH	TOLERANCES OTHERWISE SPEC. ±0.05		ANGLES ±1°	CHECKED
		SCALE	UNIT mm		DESIGNED S.J.LEE
		DWG NO. SMA-503-012		DATE. 23/SEP/2013	