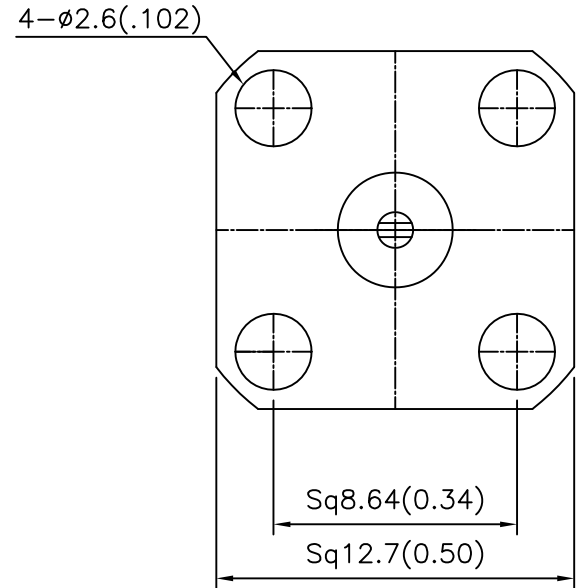
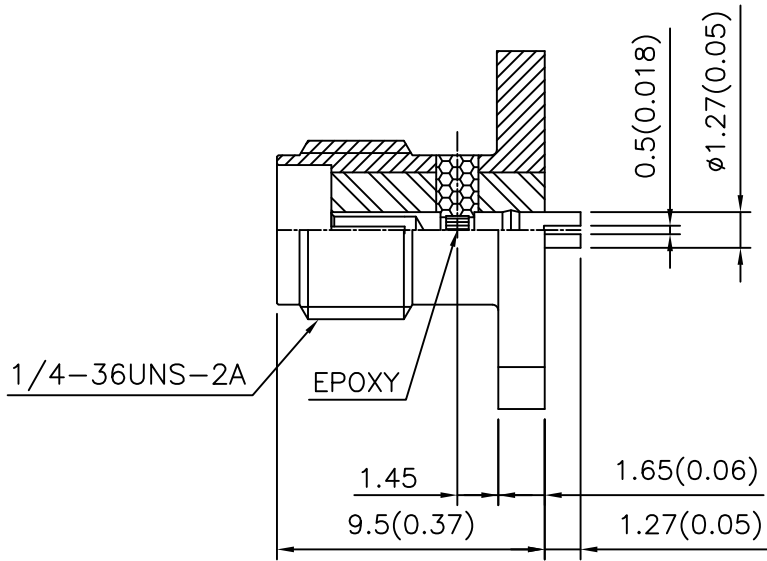


4	5	6
No.	Revision	Date
△		
△		

RoHS Compliant



- NOTES:
- INTERFACE PER MIL-STD-348
  - MATERIALS  
INSULATOR: TEFLON  
CENTER CONTACT: BERYLLIUM COPPER  
BODY: STAINLESS STEEL 303
  - FINISHES  
CENTER CONTACT: GOLD PLATE  
BODY: PASSIVATED
  - CENTER CONTACT TO BE EPOXY CAPTIVATED

SMA-Panel JACK Receptacle  
4-Hole/ (SQ 1/2")-SLOT TERMINAL

CUSTOMER

NO.	DESCRIPTION	Q'TY	MATERIAL	FINISH	REMARKS.
PARTS No.	SMA-504-023	NAME	SMA-SJ-4H RECEP.		APPROVED
MATERIAL	FINISH	TOLERANCES OTHERWISE SPEC. ±0.05		ANGLES ±1°	CHECKED
SCALE		UNIT	mm		DESIGNED S.J.LEE
		DWG NO.	SMA-504-023		DATE. 27/NOV/2008