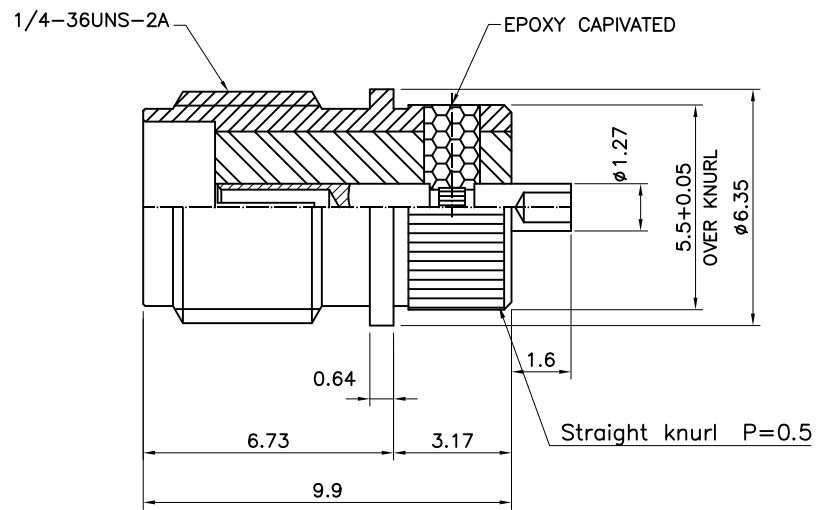


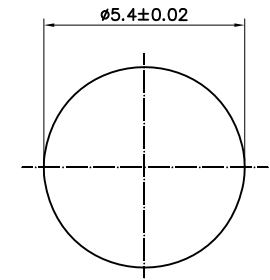
1                      2                      3                      4                      5                      6

No.	Revision	Date	Name
<del>No.</del>	PN Change from 1S-604SG-PT1320E	21/06/2013	B.G.YUN
<del>No.</del>			

RoHS Compliant



Recommended mounting hole



SMA PRESS-IN JACK

Item	Materials	Plating
Body	Stainless steel	Gold plated
Center contact	Beryllium copper	Gold plated
Insulator	PTFE	-

**CUSTOMER**

NO.	DESCRIPTION	Q'TY	MATERIAL	FINISH	REMARKS.
PART No.	SMA-509-034	NAME	SMA PRESS-IN JACK		APPROVED
MATERIAL	FINISH	TOLERANCES OTHERWISE SPEC. ±0.05		ANGLES ±1°	CHECKED
SCALE		UNIT	mm		DESIGNED S.J.LEE
DWG NO.		SMA-509-034			DATE. 06/APR/2012

