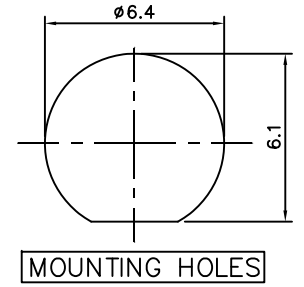
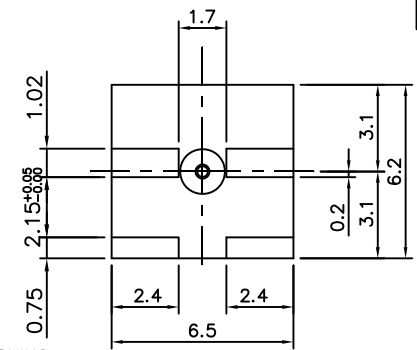
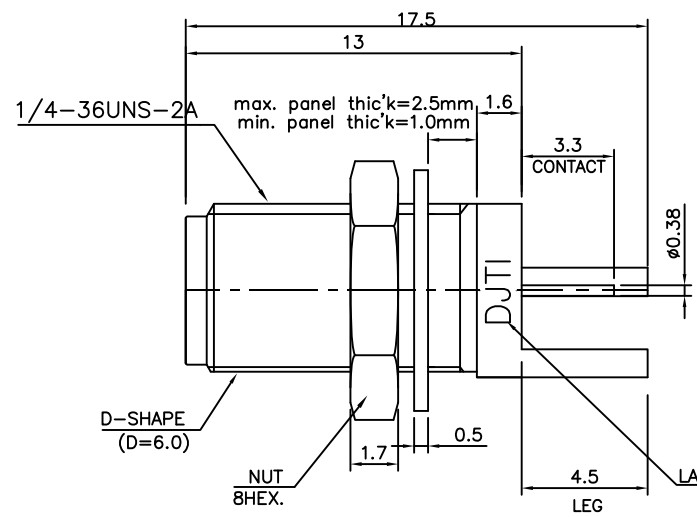
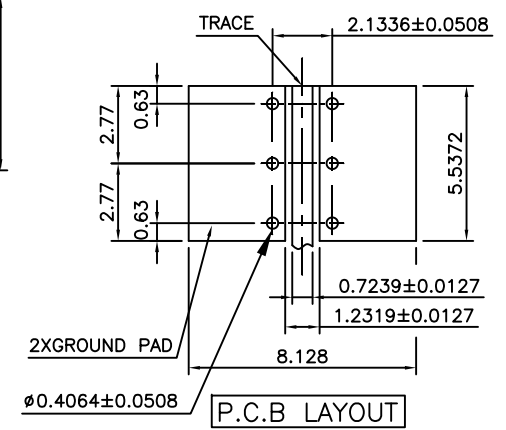


No.	Revision	Date	Name



RoHS Compliant



D
C
B
A

NOTES.

ELECTRICAL RATINGS
 Impedance : 50 ohm
 Frequency Range : DC~18GHz
 Insulation Resistance : 5000MΩ min
 Contact Resistance : < 3mΩ
 Working Voltage : 335 VRMS max
 Dielectric Withstanding Voltage : 1000V min

MECHANICAL DATA
 Coupling nut torque; 12Ncm~170Ncm
 Coupling nut retention force; >200N
 Life; 500 matings.
 Contact captivation; >27N

ENVIRONMENTAL DATA
 Operating and Storage Temperature range; -45°C~85°C/-65°C~125°C
 Vibration test; MIL-STD-202,Method204,Condition D.
 Mechanical Shock; MIL-STD-202,Method213,Condition I.
 Moisture resistance; MIL-STD-202,Method106.

****Center contact EPOXY captivated**

*100% Specification guarantee mentioned on the drawing + COC

EPOXY
 ø1.5Thru

CUSTOMER

Connector parts	Materials	Finish
Body	Brass	Gold Plated 0.1micron over
Center contact	Beryllium copper	Electroless Nickel 2~4micron
Insulator	TEFLON	Gold Plated 0.1micron under
Lock washer	Stainless steel	-
Nut	Brass	Gold Plated 0.1micron under

SMA End Launch Bulkhead Jack Receptacle
 -Round Contact(2.00Board)

NO.	DESCRIPTION	Q'TY	MATERIAL	FINISH	REMARKS.
PARTS No.	SMA-604-033	NAME	SMA-Side/BJ-PCB		APPROVED K.Y.SON
MATERIAL	FINISH	TOLERANCES	OTHERWISE SPEC. ±0.05 ANGLES ±1°		CHECKED J.M.JEON
SCALE	UNIT	mm		DESIGNED S.J.PARK	
DWG NO.	SMA-604-033			DATE.	31/JUL/2012

