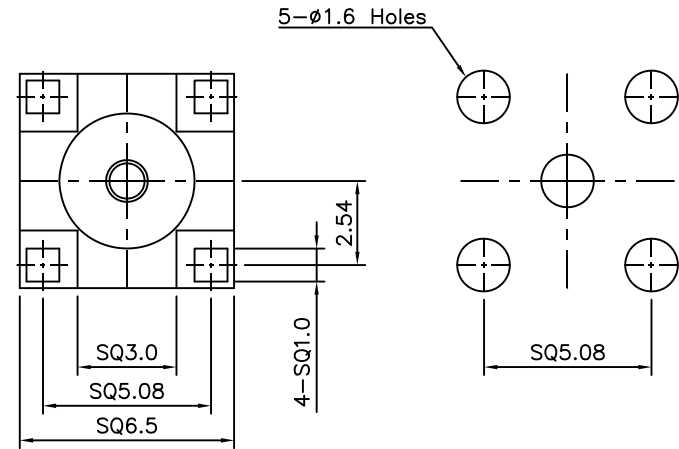
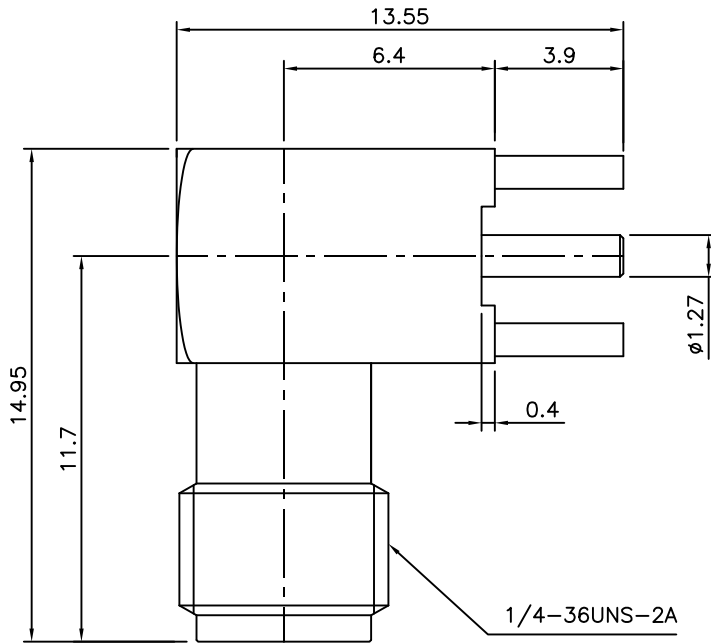


ELECTRICAL RATINGS

Impedance : 50 ohm
 Frequency Range : DC~12.4GHz
 Insulation Resistance : 5000MΩ min
 Contact Resistance : < 3mΩ
 Working Voltage : 335 VRMS max
 Dielectric Withstanding Voltage : 750V min

| No. | Revision | Date | Name |
|-----|-----------------------------|-------------|----------|
| ▲ | PN Change from 1S-710-S6439 | AUG/05/2013 | S.J.PARK |
| ▲ | | | |

RoHS Compliant



| Connector parts | Materials | Finish |
|-----------------|------------|-------------|
| Body | Brass | Gold Plated |
| Center contact | BeCu/Brass | Gold Plated |
| Insulator | PTFE | |

SMA-Right Angle FEMALE
PCB MOUNT

| NO. | DESCRIPTION | Q'TY | MATERIAL | FINISH | REMARKS. |
|-----------------|-------------|-------------------------------------|------------|------------------------|----------------------|
| PARTS No. | SMA-608-012 | | NAME | SMA-RA J PCB | APPROVED |
| MATERIAL | FINISH | TOLERANCES OTHERWISE SPEC. ±0.05 | | ANGLES ±1° | CHECKED |
| | | SCALE | UNIT mm | | DESIGNED S.J.LEE |
| CUSTOMER | | DONGJIN TI. | | DWG NO. SMA-608-012 | DATE. 13/NOV/2005 |