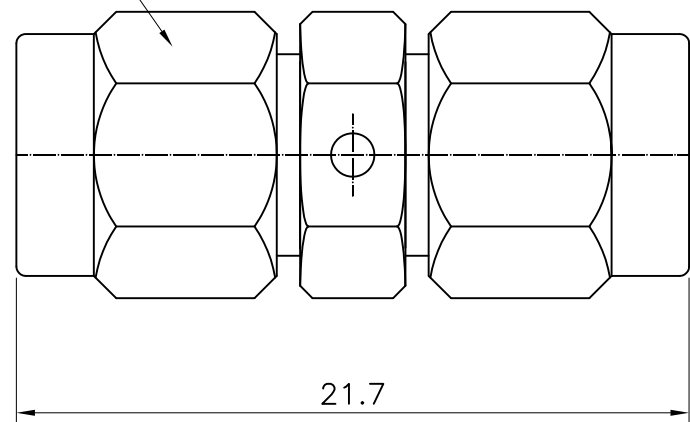


No.	Revision	Date	Name
△	PN Change from 1S-801-00	24/06/2013	B.G.YUN
△			

RoHS Compliant

8HEX.



SPECIFICATIONS

- Impedance : 50 ohm
- Frequency Range : DC~18GHz
- V.S.W.R : 1.20:1
- Insulation Resistance : 5000MΩ min
- Contact Resistance : < 3mΩ
- Working Voltage : 335 VRMS max
- Dielectric Withstanding Voltage : 1000V min
- Operating Temperature range; -45°C~85°C
- Duarblity; 500 Cycles

Connector parts	Materials	Finish
Coupling Cap	Brass	Gold Plated
Body	Brass	Gold Plated
Center contact	Brass	Gold Plated
Insulator	PTFE	-

SMA PLUG to PLUG-ADAPTOR

NO.	DESCRIPTION	Q'TY	MATERIAL	FINISH	REMARKS.
PARTS No.	SMA-801-001		NAME	SMA-PP-ADAPTOR	APPROVED
MATERIAL	FINISH	TOLERANCES OTHERWISE SPEC. ±0.05		ANGLES ±1°	CHECKED
SCALE N/S		UNIT mm			DESIGNED S.J.LEE
		DWG NO.	SMA-801-001		DATE. 04/MAY/2012

CUSTOMER