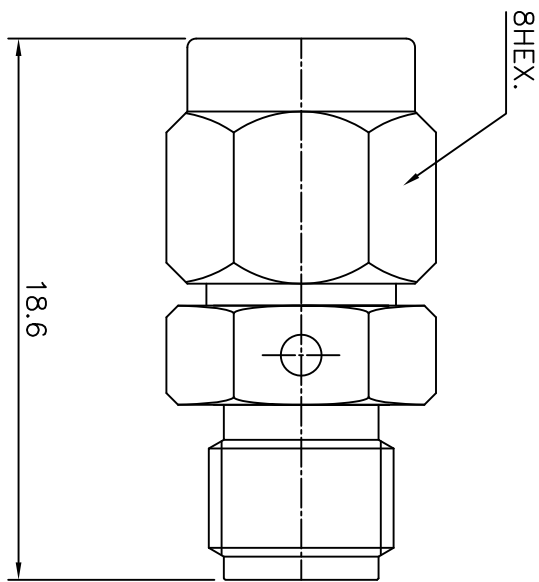


1 2 3 4 5 6

SPECIFICATIONS

Impedance : 50 ohm
 Frequency Range : DC~18GHz
 V.S.W.R : 1.20:1
 Insulation Resistance : 5000MΩ min
 Contact Resistance : < 3mΩ
 Working Voltage : 335 VRMS max
 Dielectric Withstanding Voltage : 1000V min
 Operating Temperature range: -45°C~+135°C
 Durability: 500 Cycles

RoHS Compliant



Connector parts	Materials	Finish
Coupling Cap	Brass	Gold Plated
Body	Brass	Gold Plated
Center contact	Beryllium copper	Gold Plated
Insulator	PTFE	-

**SMA PLUG to JACK
ADAPTOR**

No.	Revision	Date	Name

NO.	DESCRIPTION	Q'TY	MATERIAL	FINISH	REMARKS.	
PARTS No.	SMA-802-001	NAME	SMA-PJ ADAP.	APPROVED	CHECKED	
MATERIAL	FINISH	TOLERANCES OTHERWISE SPEC. ±0.05 ANGLES ±1°		DESIGNED		
		SCALE	N/S	UNIT	mm	DATE.
		DWG NO.	SMA-802-001			20/MAY/2012

CUSTOMER



DONGJIN TI.