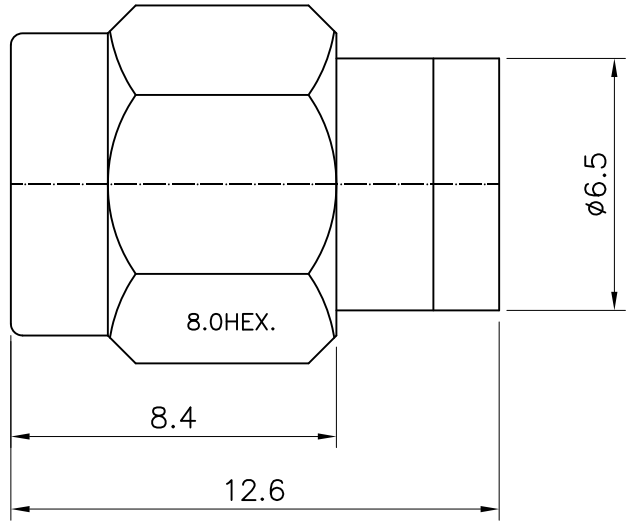


4	5	6	
No.	Revision	Date	Name
△	PN Change from 1S-901S-18G	01/07/2013	B.G.YUN
△			

RoHS Compliant



SPECIFICATIONS

Frequency Range----- DC-18GHz  
 VSWR-----1.15:1Max.(DC~12GHz)  
                   1.20:1Max.(DC~18GHz)  
 Impedance----- 50 Ohms  
 Power Rating----- 1 Watts  
 Oper Temp Range----- -45°C~+85°C

Connector parts	Materials	Finish
Coupling Cap	Stainless steel	Passivated
Body	Stainless steel	Passivated
Center contact	Brass	Gold Plated
Insulator	PTFE	-
Gasket	Silicone Rubber	-

**CUSTOMER**

NO.	DESCRIPTION	Q'TY	MATERIAL	FINISH	REMARKS.
PARTS No.	SMA-901-014		NAME	SMA-M-TERMINATION	APPROVED
MATERIAL	FINISH	TOLERANCES OTHERWISE SPEC. ±0.05		ANGLES ±1°	CHECKED
		SCALE	UNIT mm		DESIGNED S.J.LEE
		DWG NO.	SMA-901-014		DATE. 24/DEC/2007