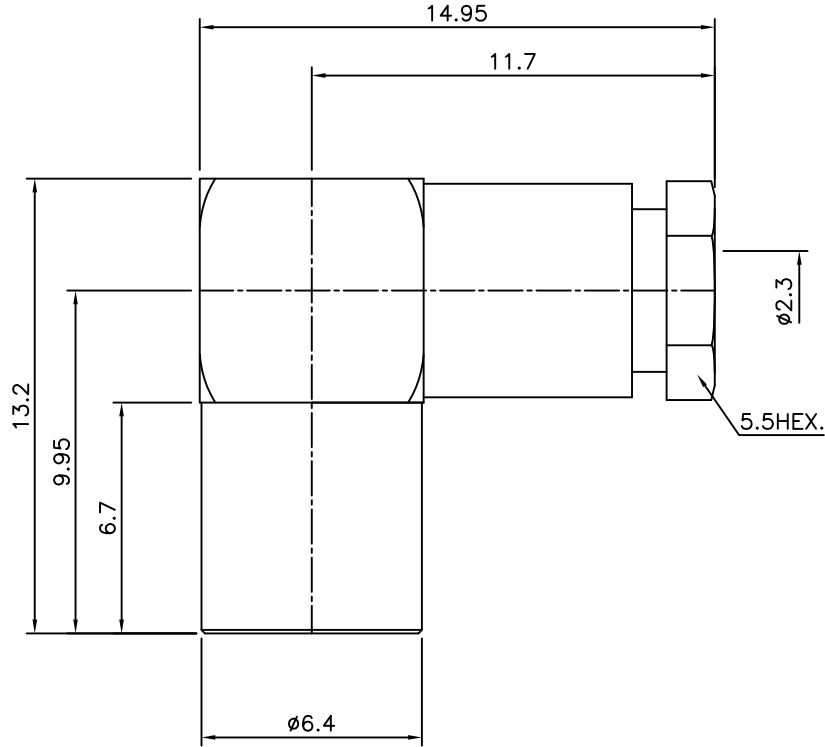


4	No.	Revision	Date	Name
	△	PN Change from 1P-320-1551	14/FEB/2014	S.J.PARK
	△			

RoHS Compliant



SMB-Right Angle-PLUG  
for Cable-RG178

Connector parts	Materials	Finish
Clamp nut	Brass	Gold Plated
Body	Brass	Gold Plated
Center contact	Be-Cu	Gold Plated
Insulator	PTFE	-

NO.	DESCRIPTION	Q'TY	MATERIAL	FINISH	REMARKS.
PARTS No.	SMB-310-002	NAME	SMA-RA PLUG 178		APPROVED
MATERIAL	FINISH	TOLERANCES OTHERWISE SPEC. ±0.05		ANGLES ±1°	CHECKED
SCALE		UNIT	mm		DESIGNED S.J.LEE
DWG NO.		SMB-310-002		DATE.	06/SEP/2007

**CUSTOMER**

