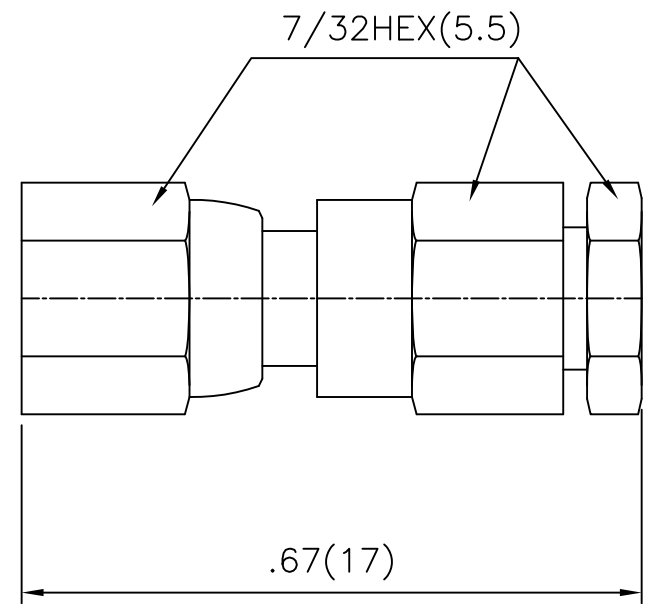


1 2 3 4 5 6

No.	Revision	Date	Name
1	PN Change from 1C-1101-003	23/AUG/2013	S.J.PARK

**SPECIFICATIONS**  
 Impedance : 50 ohm  
 Frequency Range : DC~10.0GHz  
 V.S.W.R : ≤1.2 at 3GHz  
 Insulation Resistance : 5000MΩ min  
 Contact resistance : inner conductor <6.0mΩ  
                           Outer conductor <1.0mΩ  
 RF Leakage : -55 dB(min.)  
 Temperature range : -55°C to +155°C

RoHS Compliant



SMC—Straight Female  
 Cable PLUG—RG316  
 (Captive contact)

Connector parts	Materials	Finish
Body	Brass	Gold Plated
Coupling cap	Brass	Gold Plated
Center contact	Beryllium copper	Gold Plated
Insulator	TEFLON	-

NO.	DESCRIPTION	Q'TY	MATERIAL	FINISH	REMARKS.
PARTS No.	SMC-111-002		NAME	SMC-SP-316 CRIMP	APPROVED
MATERIAL	FINISH	TOLERANCES OTHERWISE SPEC. ±0.05 ANGLES ±1°		CHECKED	
		SCALE	UNIT mm		DESIGNED S.J.LEE
<i>CUSTOMER</i>		DONGJIN TI.		DWG NO.	SMC-111-002
				DATE.	14/AUG/2013