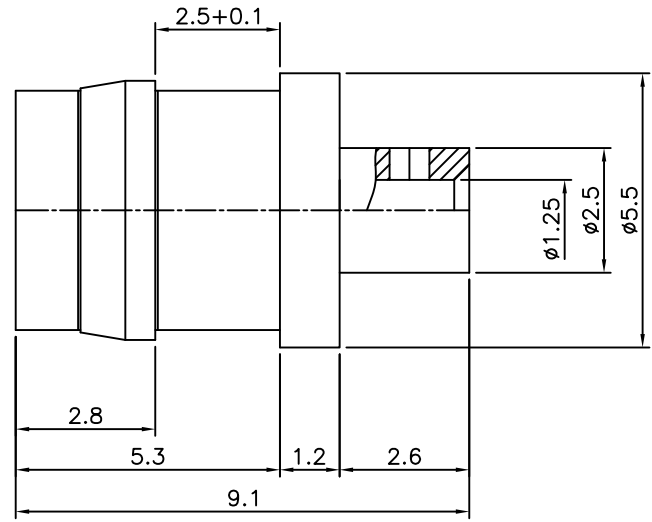
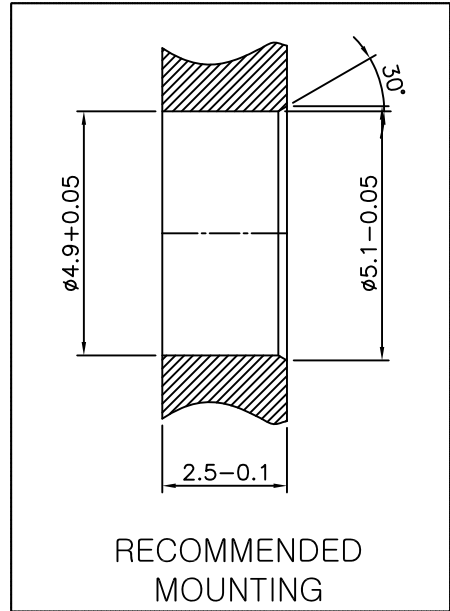


1                      2                      3                      4                      5                      6

No.	Revision	Date	Name
△			
△			

RoHS Compliant



**B** ELECTRICAL CHARACTERISTICS

Impedance: 50Ω  
 Frequency Range: DC~18GHz  
 VSWR: 1.35:1 Max  
 Insertion Loss: 0.12dm Max  
 Voltage rating: 350 Veff Max  
 Dielectric withstanding voltage: 500 Veff Min  
 Insulation resistance: 5000 MΩ Min

SMP—Straight Male Full detent  
for Cable—UT047

Connector parts	Materials	Finish
Body	Stainless steel	Passivated
Solder Body	Stainless steel	Gold 0.76um Plated
Center contact	Beryllium copper	Gold 1.27um Plated
Insulator	PTFE	—
Spring	Music Wire	—

**CUSTOMER**

NO.	DESCRIPTION	Q'TY	MATERIAL	FINISH	REMARKS.
PARTS No.	SMP-100-002		NAME	SMP-ST MALE 047	APPROVED S.J.LEE
MATERIAL	FINISH	TOLERANCES OTHERWISE SPEC. ±0.05		ANGLES ±1°	CHECKED
		SCALE	UNIT mm		DESIGNED S.J.PARK
		DWG NO.		SMP-100-002	DATE. 28/OCT/2013

D  
C  
B  
A