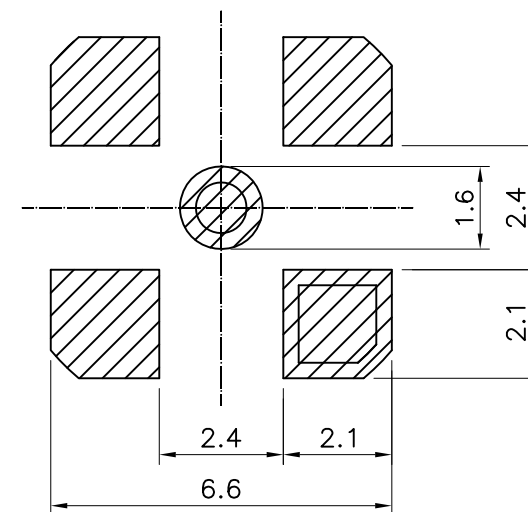
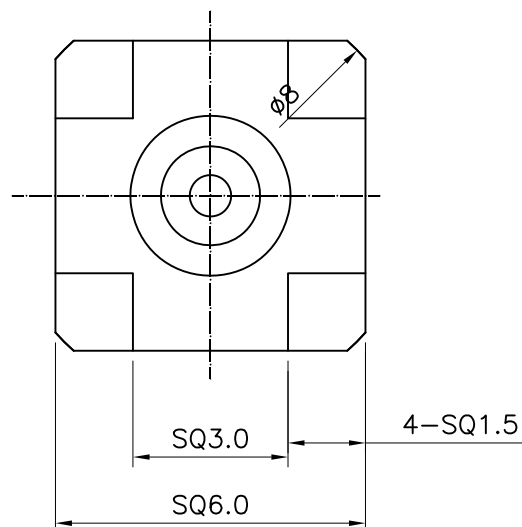
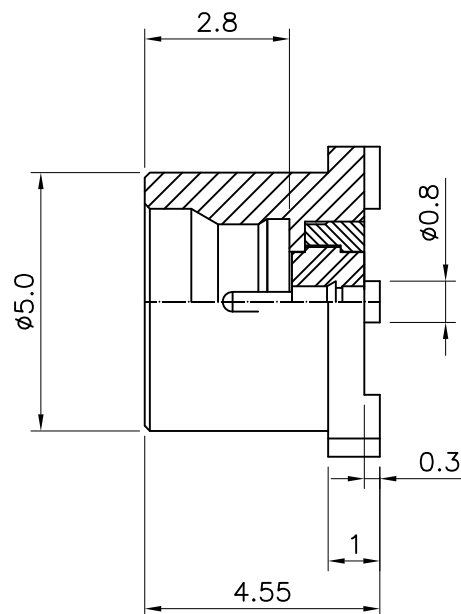


No.	Revision	Date	Name
△			
△			

RoHS Compliant



SMT-Location  
Solderpad Layout

Electrical Data  
Impedance : 50 OHm  
Frequency range : DC~10 GHz  
Contact current : DC 1.2A MAX.  
Working voltage : 300V RMS  
V.S.W.R :  $\leq 1.20$   
Temperature range :  $-65^{\circ}\text{C} \sim +125^{\circ}\text{C}$

SMP Straight-MALE SMT PCB(50 Ohm)  
(FULL DETENT)

Item	Materials	Plating
Body	Brass	Gold Plated
Center contact	Beryllium copper	Gold Plated
Insulator	PTFE	-

CUSTOMER

NO.	DESCRIPTION	Q'TY	MATERIAL	FINISH	REMARKS.
PARTS No.	SMP-601-002	NAME	SMP-MALE-PCB(FD)	APPROVED	
MATERIAL	FINISH	TOLERANCES OTHERWISE SPEC. $\pm 0.05$	ANGLES $\pm 1^{\circ}$	CHECKED	
SCALE	UNIT mm	DESIGNED S.J.LEE			
DWG NO.	SMP-601-002	DATE. 21/OCT/2013			



DONGJIN TI.