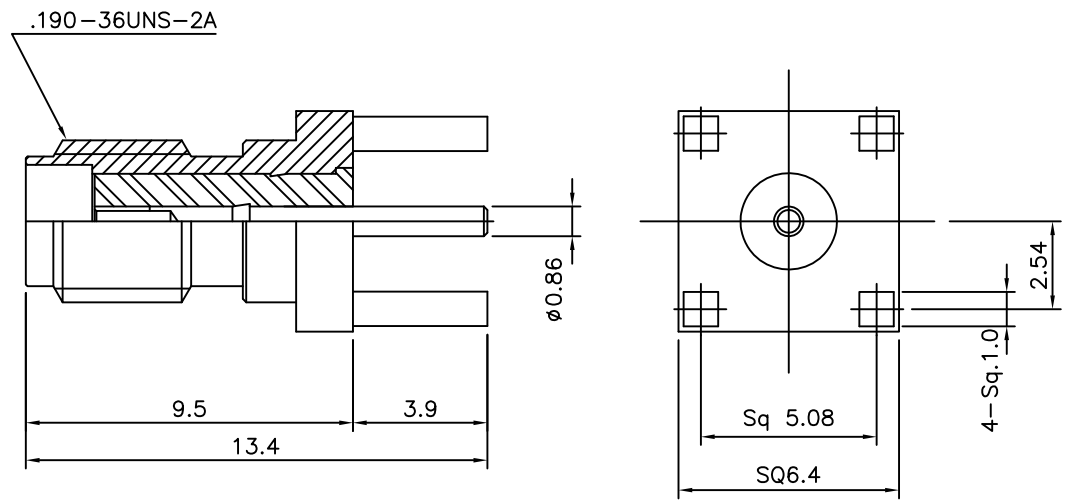


4	No.	Revision	Date	Name
	▲	PN Change from 1MA-521S-9539	14/JAN/2014	S.J.PARK
	▲			

NOTES:

1. This Connector is SSMA Straight Jack PCB Mount
2. ELECTRIC SPEC:
  - 2.1 Impedance: 50ohm
  - 2.2 Frequency Range: DC~18 GHz
  - 2.3 Voltage rating: 250 volts peak
  - 2.4 Dielectric Withstanding Voltage: 750 VRMS
  - 2.5 VSWR: 1.25 Max
  - 2.6 Contact Resistance
    - 2.6.1 Center Contact: 2.0 Milliohms
    - 2.6.2 Outer Contact: 2.0 Milliohms
  - 2.7 Insulation Resistance: 5000 megohms
3. MECHANICAL DATA:
  - 3.1 Mating: .190-36 threaded coupling
  - 3.2 Recommended Mating torque: 5 inch-pounds
  - 3.3 Connector Durability: 500 mating and unmating cycles 12 cycles per min
4. ENVIRONMENTAL DATA:
  - 4.1 Temperature Range: -55°C to +155°C

RoHS Compliant



SSMA - Straight JACK PCB MOUNT

Connector parts	Materials	Finish
Body	Stainless steel	Gold Plated
Center contact	BeCu	Gold Plated
Insulator	PTFE	-

NO.	DESCRIPTION	Q'TY	MATERIAL	FINISH	REMARKS.
PARTS No.	SSMA-602-001	NAME	SSMA-SJ-PCB		APPROVED
MATERIAL	FINISH	TOLERANCES OTHERWISE SPEC. ±0.05		ANGLES ±1°	CHECKED
SCALE		UNIT	mm		DESIGNED S.J.LEE
DWG NO.		SSMA-602-001		DATE.	16/JUN/2012

CUSTOMER

