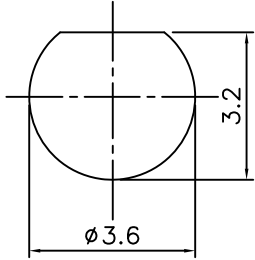
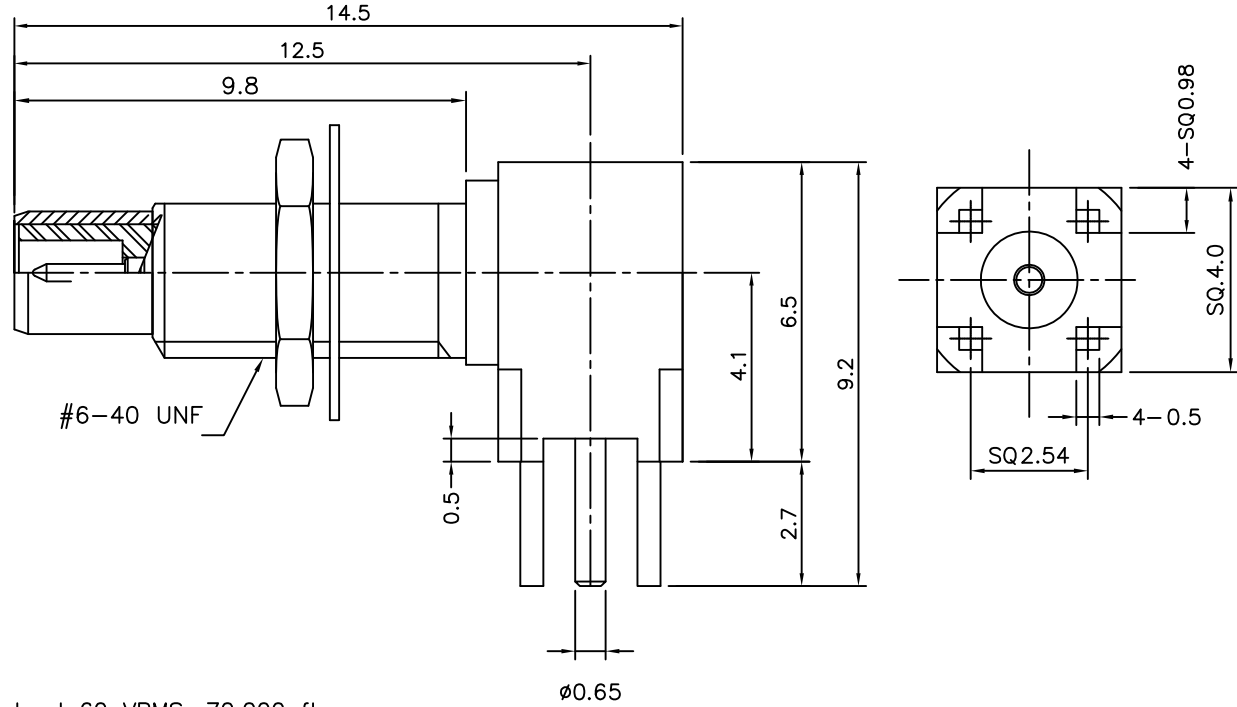


4	5	6	
No.	Revision	Date	Name
▲	PN Change from 1MC-742-4127	20/12/2013	B.G.YUN
▲			



PANEL MOUNT



SSMC RightAngle Bulkhead JACK-Receptacle (Standoff legs)

Electrical
 Impedance: 50ohms
 Frequency range: DC-12.4GHz
 Voltage rating: 250 VRMS, sea level 60 VRMS, 70,000 ft
 Insulation resistance: 1000 meg ohms minimum
V.S.W.R
 1.20+(.025xF[GHz])
Environmental
 Temperature rating: -65°C to +165°C

Connector parts	Materials	Finish
Body & Nut	Brass	Gold Plated
Center contact	Brass	Gold Plated
Insulator	PTFE	N/A

CUSTOMER

NO.	DESCRIPTION	Q'TY	MATERIAL	FINISH	REMARKS.
PARTS No.	SSMC-608-001	NAME	SSMC RA B/H JACK-PCB		APPROVED
MATERIAL	FINISH	TOLERANCES	OTHERWISE SPEC. ±0.05 ANGLES ±1°		CHECKED
		SCALE	UNIT		DESIGNED
			mm		S.J.LEE
		DWG NO.	SSMC-608-001		DATE.
					20/DEC/2013